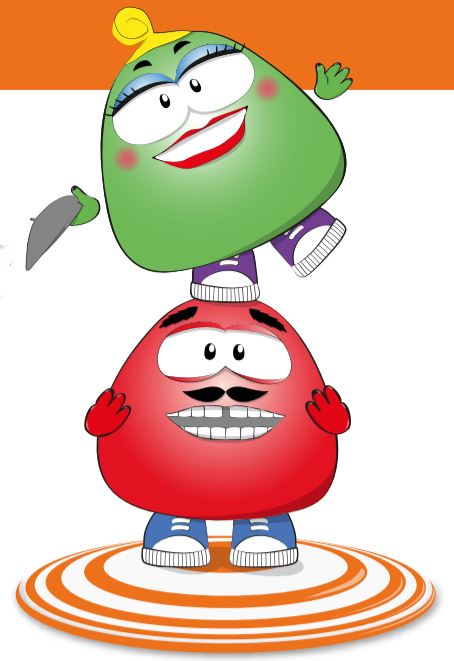


# Get started with The Chase



The Chase is a movement- and memory game, where you really break a sweat.

You have to catch the characters Grace and Ralph, who are hiding in the spots as patterns of light. You catch them by stepping on the spots that light up.

## How to play



Step on the spots that you want to use for playing. The spots light up when they have been selected.





Choose on the washing line if you want to play in 1 or 2 teams.

Pick the game you want to play from the shelves. Number 1 is the easiest and number 30 is the hardest level. If a box is locked you have to play the game before it in order to unlock the box.



You are now ready to play The Chase. The team that is first at topping up the pile of points wins!



You can press  to play the same game and level and skip the game introduction. You can also press  to jump directly to the next level without the introduction from the characters.

Tip!



Press **Help** to find the rules for the different levels of The Chase.